

State of Wyoming Corner Record

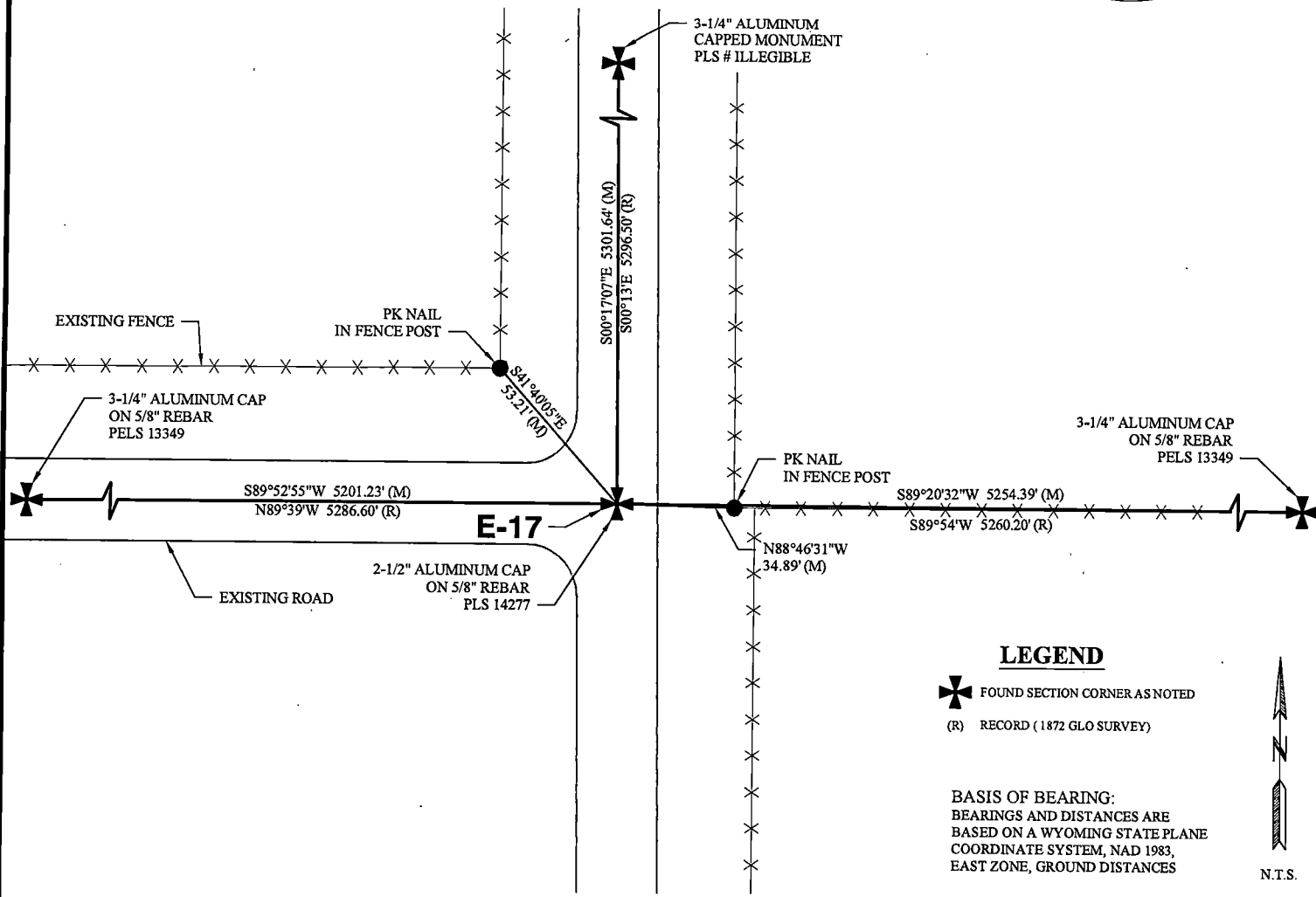
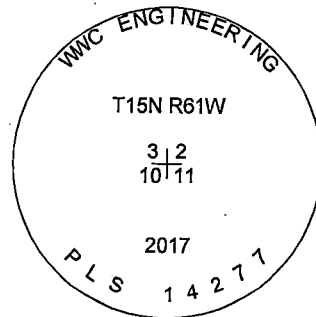
(In compliance with the CORNER PERPETUATION AND FILING ACT, Wyoming Statutes, 1997, Section 33-29-140, et seq., and the Rules and Regulations of the Board of Registration for Professional Engineers and Professional Land Surveyors)

Reverse side of this form may be used if more space is needed.

Record of original survey and citation of source of historical information (if corner is lost or obliterated.) Description of corner monumentation evidence found and/or monument and accessories established to perpetuate the location of this corner. Sketch of relative location of monument, accessories, and reference points with course and distance to adjacent corner(s) (if determined in this survey). Method and rationale for reestablishment of lost or obliterated corner.

EVIDENCE RECORD: 1872 GLO Survey: North between sections 10 & 11, 80.00 chains. Set sand stone 18"x10"x5" for corner to sections 2, 3, 10 & 11.

EVIDENCE FOUND: August 2017: Sand stone from 1872 GLO survey not found. Accepted intersection of north, south & west roads and fence extending east as best available evidence for the corner to sections 2, 3, 10 & 11. Set a 2 1/2" aluminum cap marked as shown on a 5/8" rebar, 26" long, 8" below road surface.



LEGEND
 FOUND SECTION CORNER AS NOTED
 (R) RECORD (1872 GLO SURVEY)

BASIS OF BEARING:
 BEARINGS AND DISTANCES ARE BASED ON A WYOMING STATE PLANE COORDINATE SYSTEM, NAD 1983, EAST ZONE, GROUND DISTANCES

N.T.S.

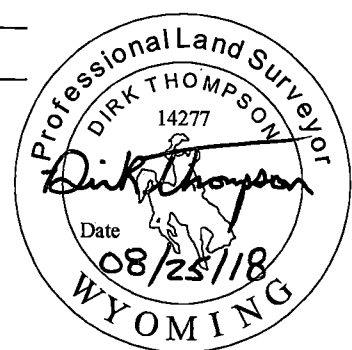
Date of Field Work: August 01, 2017 Office Reference: 2017-135

CROSS INDEX DIAGRAM

	1	2	3	4	5	6	7	8	9	10	11	12	13	14	15	16	17	18	19	20	21	22	23	24	25
A																									
B																									
C		6																							
D																									
E																									
F																									
G		7																							
H																									
J																									
K																									
L		18																							
M																									
N																									
O																									
P		19																							
Q																									
R																									
S																									
T		30																							
U																									
V																									
W																									
X		31																							
Y																									
Z																									

Land Surveyor / Firm / Address
Dirk Thompson
WWC Engineering
1849 Terra Avenue
Sheridan, WY 82801
 Telephone: (307) 672-0761

This corner record was prepared by me or under my direction and supervision.
SEAL & SIGNATURE



RECP #: 739879
 RECORDED 10/1/2018 AT 1:32 PM BK# 2598 PG# 313
 Debra K. Lee, CLERK OF LARAMIE COUNTY, WY PAGE 1 OF 1

Corner Name: Northeast Corner Section: 10 T 15N R 61W; 6TH P.M. Cross-Index No.: E-17
 SBRPEPLS/PLSW: March 1994; PLSW January 1998